

# Kreatech™ FISH probes

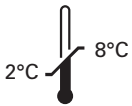
## Product Information Sheet

01P001N495  
SRD (1p36)  
Green  
50 µl

**DANGER**



**FORMAMIDE**



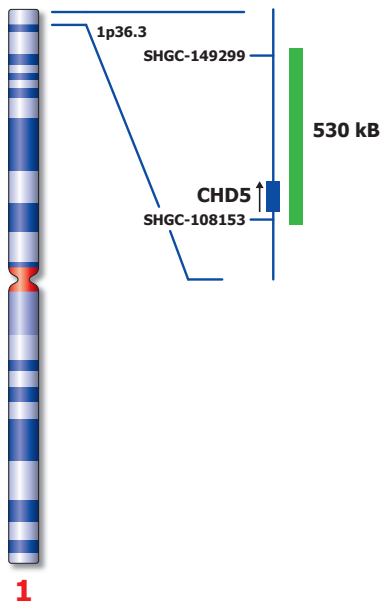
**Kreatech Biotechnology B.V.**  
Vlierweg 20  
1032 LG Amsterdam  
The Netherlands  
[www.LeicaBiosystems.com](http://www.LeicaBiosystems.com)

### Analyte Specific Reagent

Analytical and performance characteristics are not established

PI-01P001N495\_D3.1

Published August 2015



Not to scale

## Kreatech™ SRD (1p36) FISH probe

- Introduction:** The **SRD (1p36)** FISH probe is optimized to detect 1p at region 1p36.
- Critical region (green):** The **SRD (1p36)** FISH probe is direct-labeled with PlatinumBright™495
- Reagent:** The **SRD (1p36)** FISH probe is a direct-labeled DNA probe provided at ten times the concentration than the amount of DNA probe used in the QC test procedure.
- Kreatech FISH probes are REPEAT-FREE™ and therefore do not contain Cot-1 DNA. Hybridization efficiency is increased and background, due to unspecific binding, is highly reduced.**
- Patterns:** Two green (2G) signals will identify the non-aberrant SRD loci.

	Signal Pattern
Expected Signals	2G

**Warning and precautions:** In case of emergencies check SDS sheets for medical advice. SDS sheets may be obtained by either contacting Leica Technical Support or visiting [www.LeicaBiosystems.com](http://www.LeicaBiosystems.com). DNA probes contain formamide which is a teratogen; do not inhale or allow skin contact. Wear gloves and a lab coat when handling DNA probes. All materials should be disposed of according to your institution's guidelines for hospital waste disposal.

**Reagent Storage and Handling:**

Store at 2-8 °C. Reagents should not be used after the expiration date on the vial label.

**TECHNICAL SUPPORT**

Technical support is available at [www.LeicaBiosystems.com/service-support/technical-support/](http://www.LeicaBiosystems.com/service-support/technical-support/) or toll free at 800-248-0123 or via e-mail: [kreatech-support@leicabiosystems.com](mailto:kreatech-support@leicabiosystems.com).

**CUSTOMER SERVICE**

Kreatech probes may be ordered through Leica Customer Service toll free at 800-248-0123 or order via e-mail: [purchase.orders@leica-microsystems.com](mailto:purchase.orders@leica-microsystems.com).