

Kreatech™ FISH probes

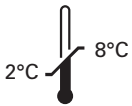
Product Information Sheet

04P001B495
FGFR3 (4p16)
Green
50 µl

DANGER



FORMAMIDE



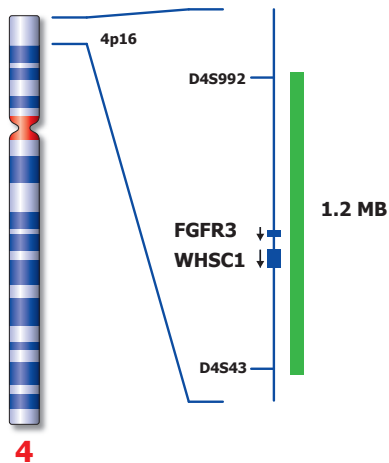
Kreatech Biotechnology B.V.
Vlierweg 20
1032 LG Amsterdam
The Netherlands
www.LeicaBiosystems.com

Analyte Specific Reagent

Analytical and performance characteristics are not established

PI-04P001B495_D3.1

Published August 2015



Not to scale

04P001B495

Kreatech™ FGFR3 (4p16) FISH probe

- Introduction:** The **FGFR3 (4p16)** FISH probe is optimized to detect FGFR3 gene region at 4p16.
- Critical region (green):** The **FGFR3 (4p16)** FISH probe is direct-labeled with PlatinumBright™495.
- Reagent:** The **FGFR3 (4p16)** FISH probe is a direct-labeled DNA probe provided at two times the concentration than the amount of DNA probe used in the QC test procedure.
- Kreatech FISH probes are REPEAT-FREE™ and therefore do not contain Cot-1 DNA. Hybridization efficiency is increased and background, due to unspecific binding, is highly reduced.**
- Patterns:** Two green (2G) signals will identify the non-aberrant FGFR3 loci.

	Signal Pattern
Expected Signals	2G

Warning and precautions: In case of emergencies check SDS sheets for medical advice. SDS sheets may be obtained by either contacting Leica Technical Support or visiting www.LeicaBiosystems.com. DNA probes contain formamide which is a teratogen; do not inhale or allow skin contact. Wear gloves and a lab coat when handling DNA probes. All materials should be disposed of according to your institution's guidelines for hospital waste disposal.

Reagent Storage and Handling: Store at 2-8 °C. Reagents should not be used after the expiration date on the vial label.

TECHNICAL SUPPORT Technical support is available at www.LeicaBiosystems.com/service-support/technical-support/ or toll free at 800-248-0123 or via e-mail: kreatech-support@leicabiosystems.com.

CUSTOMER SERVICE Kreatech probes may be ordered through Leica Customer Service toll free at 800-248-0123 or order via e-mail: purchase.orders@leica-microsystems.com.