

# Kreatech™ FISH probes

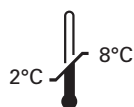
## Product Information Sheet

KI-10702  
EGFR (7p11) / SE 7  
100 µl

**DANGER**



**FORMAMIDE**



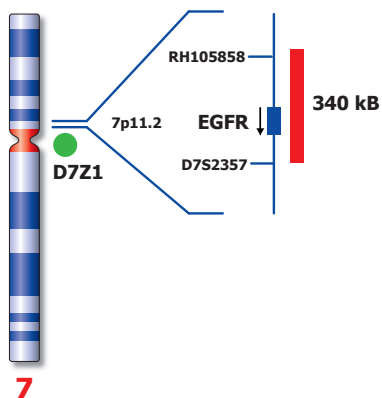
**Kreatech Biotechnology B.V.**  
Vlierweg 20  
1032 LG Amsterdam  
The Netherlands  
[www.LeicaBiosystems.com](http://www.LeicaBiosystems.com)

**RUO - Research Use Only**

Not for use in diagnostic procedures

PI-KI-10702\_D2.1

Published Sept 2015



Not to scale

## Kreatech™ EGFR (7p11) / SE 7 FISH probe

**Introduction:** The **EGFR (7p11)** specific FISH probe is optimized to detect the EGFR (Her-1) gene region at region 7p11. The **Satellite Enumeration (SE) 7** FISH probe is included to facilitate chromosome identification.

**Critical region (red):** The **EGFR (7p11)** specific FISH probe is direct-labeled with PlatinumBright™550.  
**Control region (green):** The **SE 7** FISH probe is direct-labeled with PlatinumBright™495.

**Reagent:** Kreatech probes are direct-labeled DNA probes provided in a ready-to-use format. Apply 10 µl of probe to a sample area of approximately 22 x 22 mm.

**Please refer to the Instructions for Use for the entire Kreatech FISH protocol.**

**Kreatech FISH probes are REPEAT-FREE™ and therefore do not contain Cot-1 DNA. Hybridization efficiency is increased and background, due to unspecific binding, is highly reduced.**

**Patterns:** The **EGFR (7p11) / SE 7** FISH probe is designed as a dual-color assay to detect amplification at 7p11. Amplification involving the EGFR gene region at 7p11 will show several red signals, while the control at the chromosome 7 centromere region will provide 2 green signals. Two single color red (R) and green (G) signals will identify the normal chromosomes 7 (2R2G).

	Normal Signal Pattern	Amp(7p11)
Expected Signals	2R2G	3+R2G

**References:** Jolly C et al, 1997, Hum.Genet., 101; 81-87

**Warning and precautions:** In case of emergencies check SDS sheets for medical advice. SDS sheets may be obtained by either contacting Leica Technical Support or visiting [www.LeicaBiosystems.com](http://www.LeicaBiosystems.com). DNA probes contain formamide which is a teratogen; do not inhale or allow skin contact. Wear gloves and a lab coat when handling DNA probes. All materials should be disposed of according to your institution's guidelines for hospital waste disposal.

**Reagent Storage and Handling:** Store at 2-8 °C. Reagents should not be used after the expiration date on the vial label.

**TECHNICAL SUPPORT** Technical support is available at [www.LeicaBiosystems.com/service-support/technical-support/](http://www.LeicaBiosystems.com/service-support/technical-support/) or toll free at 800-248-0123 or via e-mail: [kreatech-support@leicabiosystems.com](mailto:kreatech-support@leicabiosystems.com).

**CUSTOMER SERVICE** Kreatech probes may be ordered through Leica Customer Service toll free at 800-248-0123 or order via e-mail: [purchase.orders@leica-microsystems.com](mailto:purchase.orders@leica-microsystems.com).