

Kreatech™ FISH probes

Product Information Sheet

KI-10709

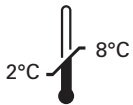
TERT (5p15) / 5q31 (tissue)

100 µl

DANGER



FORMAMIDE



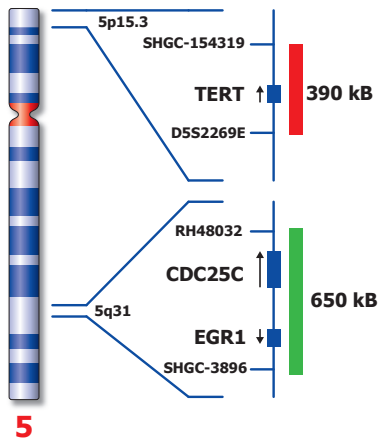
Kreatech Biotechnology B.V.
Vlietweg 20
1032 LG Amsterdam
The Netherlands
www.LeicaBiosystems.com

RUO - Research Use Only

Not for use in diagnostic procedures

PI-KI-10709_D2.1

Published Oct 2015



Not to scale

KI-10709

Kreatech™ TERT (5p15) / 5q31 (tissue) FISH probe

Introduction: The **TERT (5p15)** specific FISH probe is optimized to detect the TERT gene region at region 5p15. The **CDC25C/EGR1 (5q31)** gene region control FISH probe is included to facilitate chromosome identification.

The probe is especially developed for use on paraffin sections.

Critical region 1 (red): The **TERT (5p15)** specific FISH probe is direct-labeled with PlatinumBright™550.
Control region (green): The **5q31** FISH probe gene region is direct-labeled with PlatinumBright™495.

Reagent: Kreatech probes are direct-labeled DNA probes provided in a ready-to-use format. Apply 10 µl of probe to a sample area of approximately 22 x 22 mm.

Please refer to the Instructions for Use for the entire Kreatech FISH protocol.

Kreatech FISH probes are REPEAT-FREE™ and therefore do not contain Cot-1 DNA. Hybridization efficiency is increased and background, due to unspecific binding, is highly reduced.

Patterns: The **TERT (5p15) / 5q31 (tissue)** FISH probe is designed as a dual-color assay to detect amplifications at 5p15. Amplifications involving the TERT gene region at 5p15 will show several red signals, while the control at the chromosome 5q31 region will provide 2 green signals. Two single color red (R) and green (G) signals will identify the normal chromosomes 5 (2R2G).

	Normal Signal Pattern	Amp(5p15)
Expected Signals	2R2G	3+R2G

References: Bryce et al, 2000, Neoplasia, 2; 197-201.

Warning and precautions: In case of emergencies check SDS sheets for medical advice. SDS sheets may be obtained by either contacting Leica Technical Support or visiting www.LeicaBiosystems.com. DNA probes contain formamide which is a teratogen; do not inhale or allow skin contact. Wear gloves and a lab coat when handling DNA probes. All materials should be disposed of according to your institution's guidelines for hospital waste disposal.

Reagent Storage and Handling: Store at 2-8 °C. Reagents should not be used after the expiration date on the vial label.

TECHNICAL SUPPORT Technical support is available at www.LeicaBiosystems.com/service-support/technical-support/ or toll free at 800-248-0123 or via e-mail: kreatech-support@leicabiosystems.com.

CUSTOMER SERVICE Kreatech probes may be ordered through Leica Customer Service toll free at 800-248-0123 or order via e-mail: purchase.orders@leica-microsystems.com.