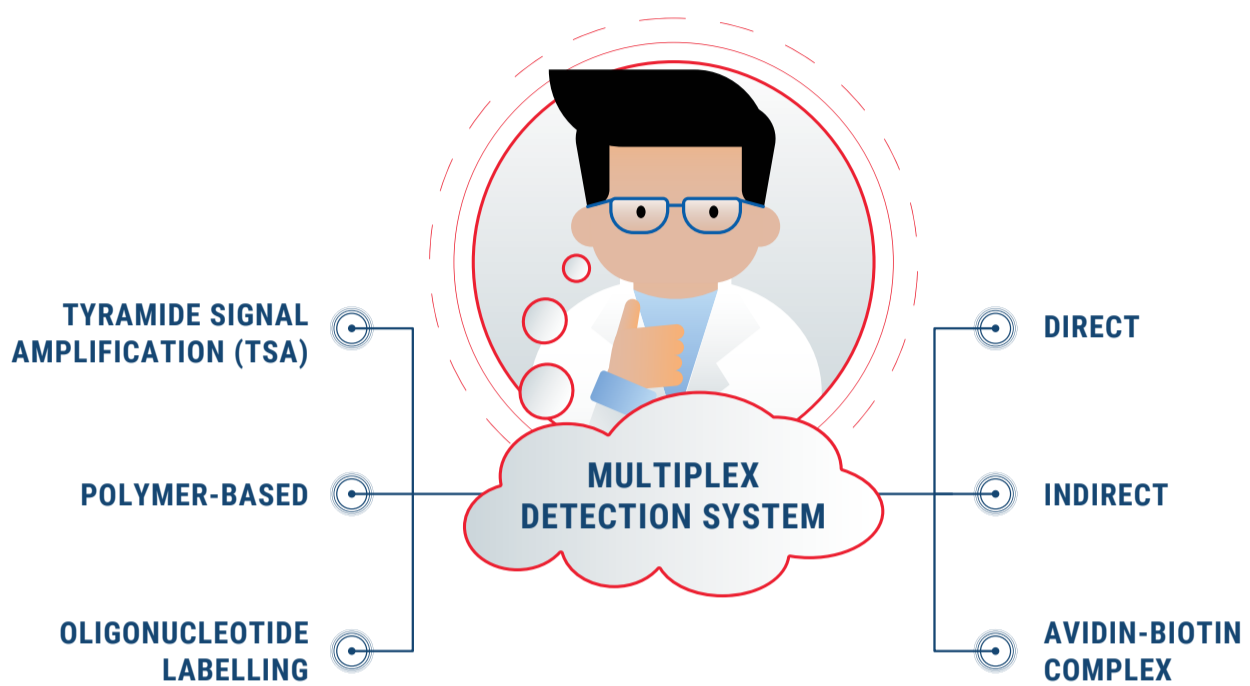


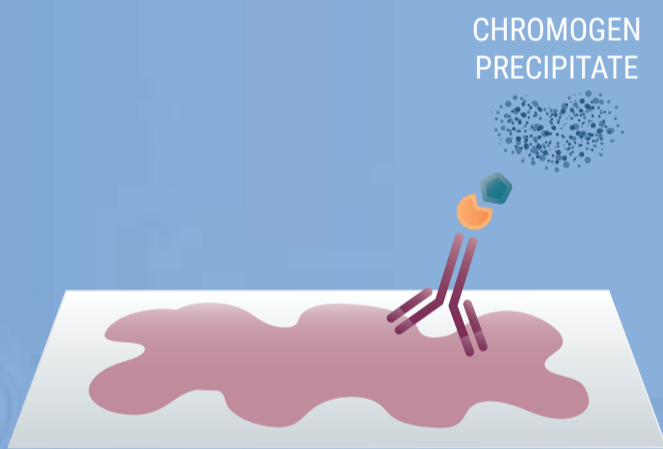
SHORT VIDEO SERIES

# MULTIPLEX DETECTION SYSTEMS

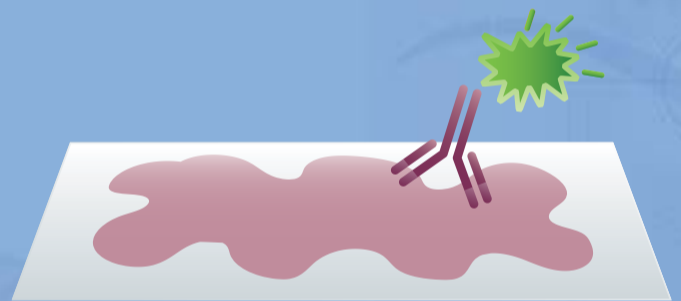
There are several detection systems available to visualize multiplex staining that are: direct primary antibody detection, or indirect detection with ABC, polymer-linked antibodies, with, or without tyramide amplification, and finally, oligonucleotide labelled primary antibodies with complementary probes. Whichever detection system you decide to use in your multiplex assay, optimization is vital.



## DIRECT DETECTION



CHROMOGENIC DETECTION

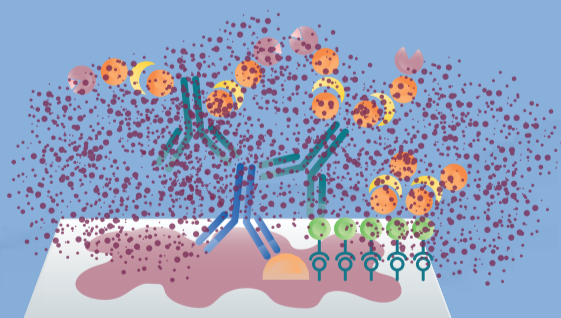


FLUORESCENT DETECTION

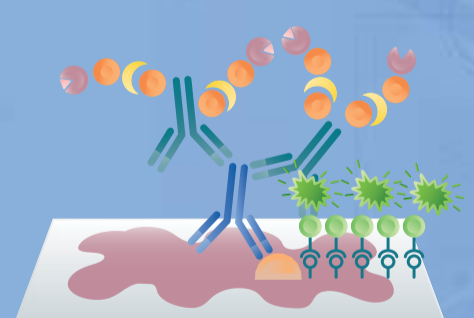
- ⦿ SUITABLE FOR HIGHLY EXPRESSED PROTEINS
- ⦿ CAN AVOID CROSS-REACTIVITY BY SPECIES-SPECIFIC SECONDARY ANTIBODIES

## INDIRECT DETECTION

- PRIMARY ANTIBODY
- SECONDARY ANTIBODY
- BIOTIN
- AVIDIN-BIOTIN COMPLEX
- ENZYME (HORSE RADISH PEROXIDASE / ALKALINE PHOSPHATASE)
- TYRAMIDE
- FLUOROPHORE



CHROMOGENIC DETECTION



FLUORESCENT DETECTION

## TYRAMIDE SIGNAL AMPLIFICATION DETECTION SYSTEM

[FOR MORE INFORMATION ABOUT MULTIPLEXING, CLICK HERE.](#)

FOR RESEARCH USE ONLY. NOT FOR USE IN DIAGNOSTIC PROCEDURES.